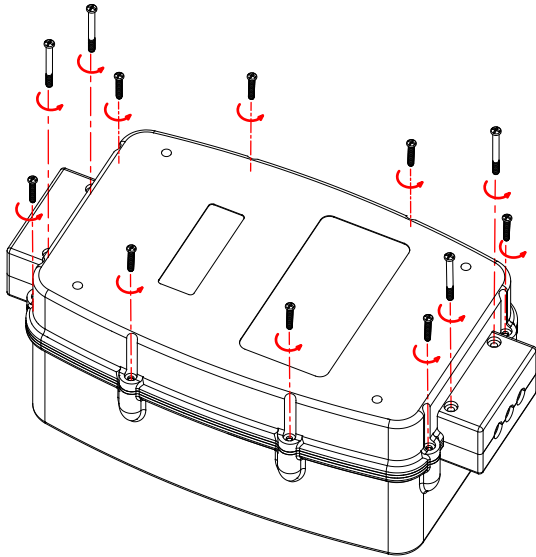
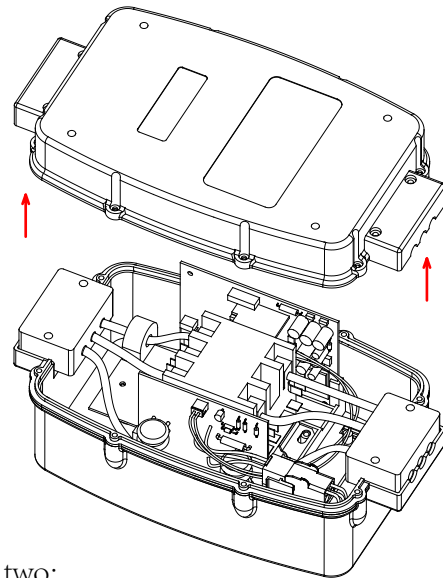


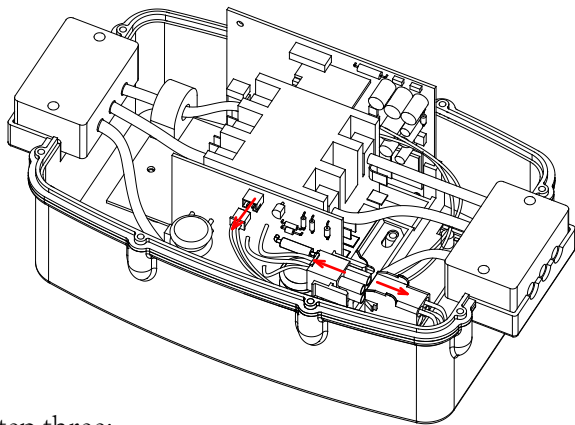
PWD30-EPO-H SURGE MODULE REPLACEMENT INSTRUCTIONS



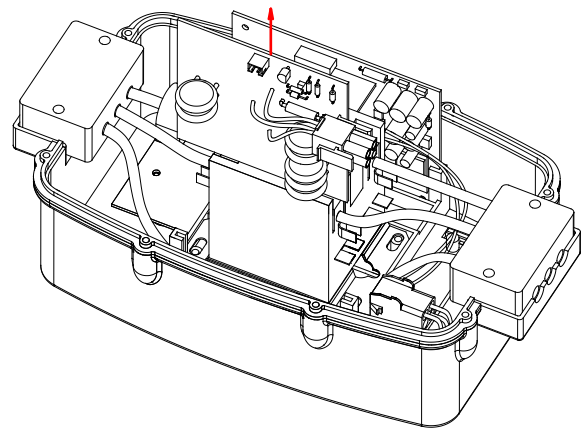
Step one:
Unscrew the 8 Phillips screws (M3*16) & 4 Phillips screws (M3*30) on the back side of the unit.



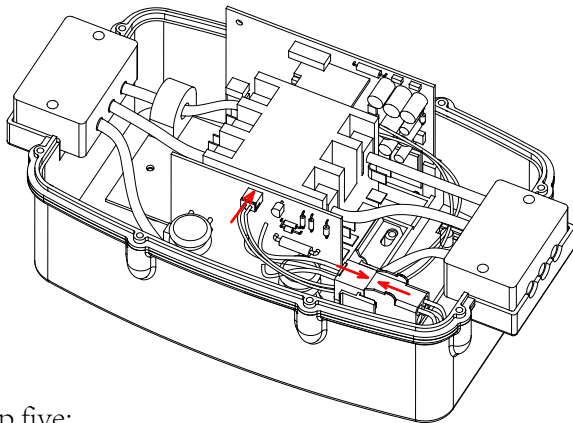
Step two:
Carefully separate the top and bottom halves of the Power Watchdog Unit.



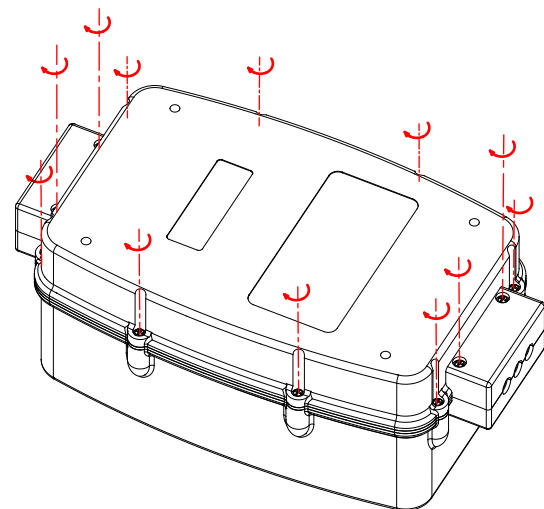
Step three:
Unclip the connections. Take note of where these connections come from.



Step four:
Carefully slide out the used up surge module.



Step five:
Slide in the new surge module into the slots inside the Power Watchdog unit. clip together the connections.
*Note-you may use the white connector only, or you may use the red and white connectors. Just match the color and size of your connectors.



Step six:
Place top and bottom halves together, rescrew all the screws, tighten down the cable gland connectors.
*Do not overtighten the screws.